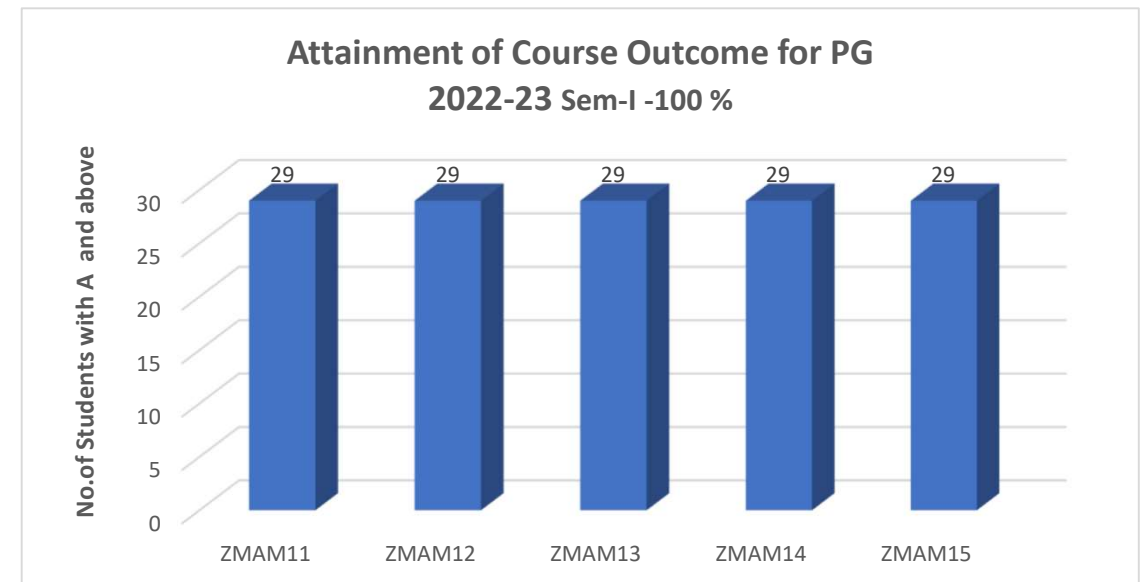
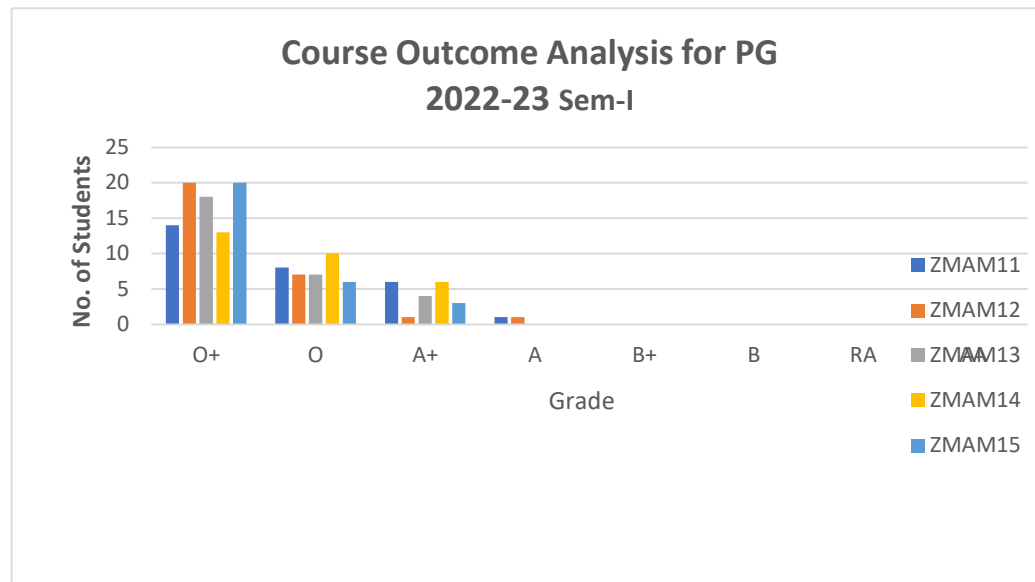


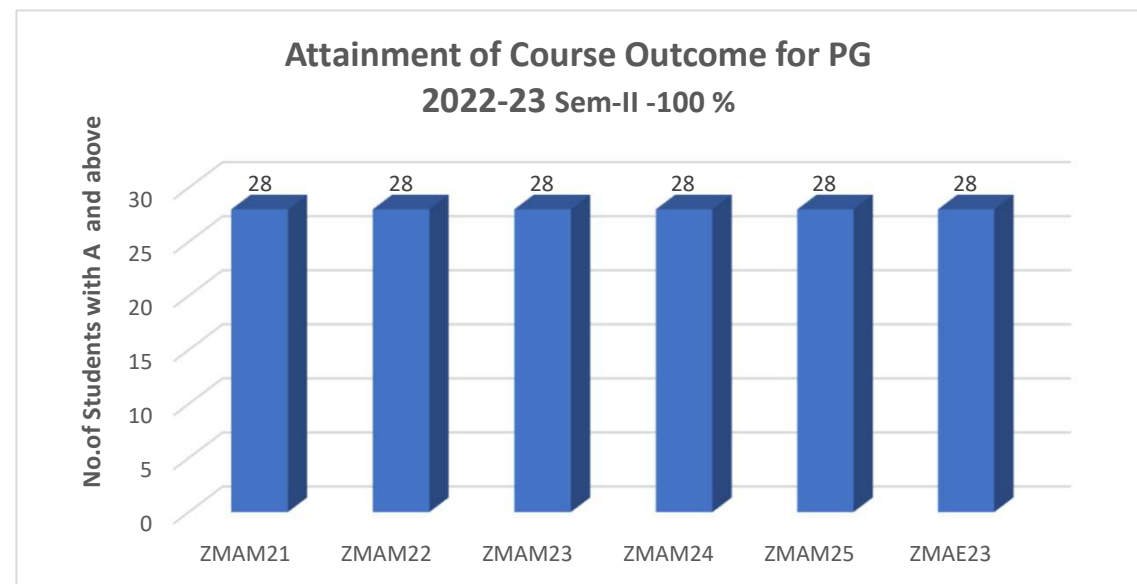
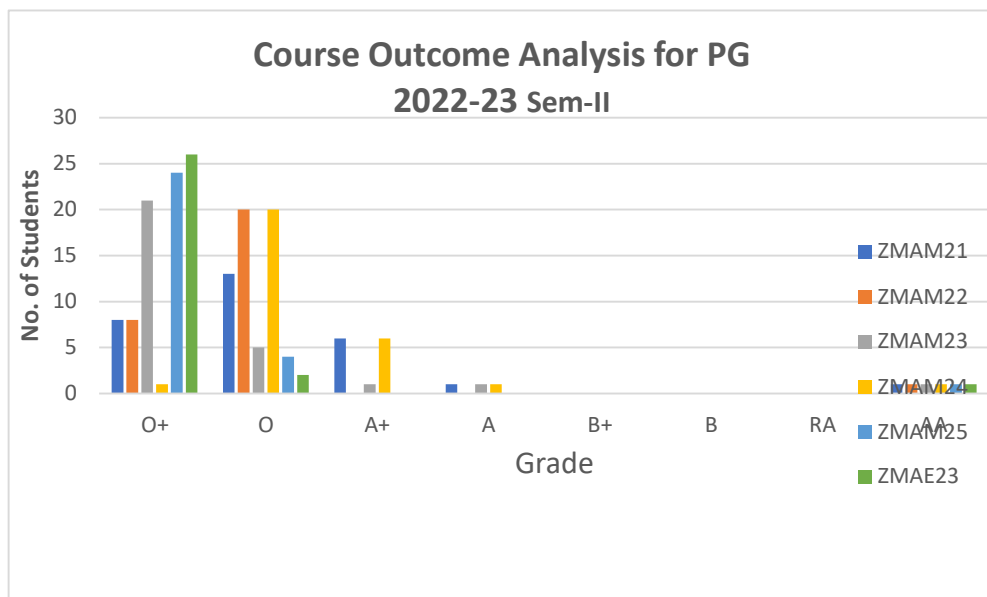
## Course Outcome Analysis for PG 2022-2023

### MATHEMATICS (A)

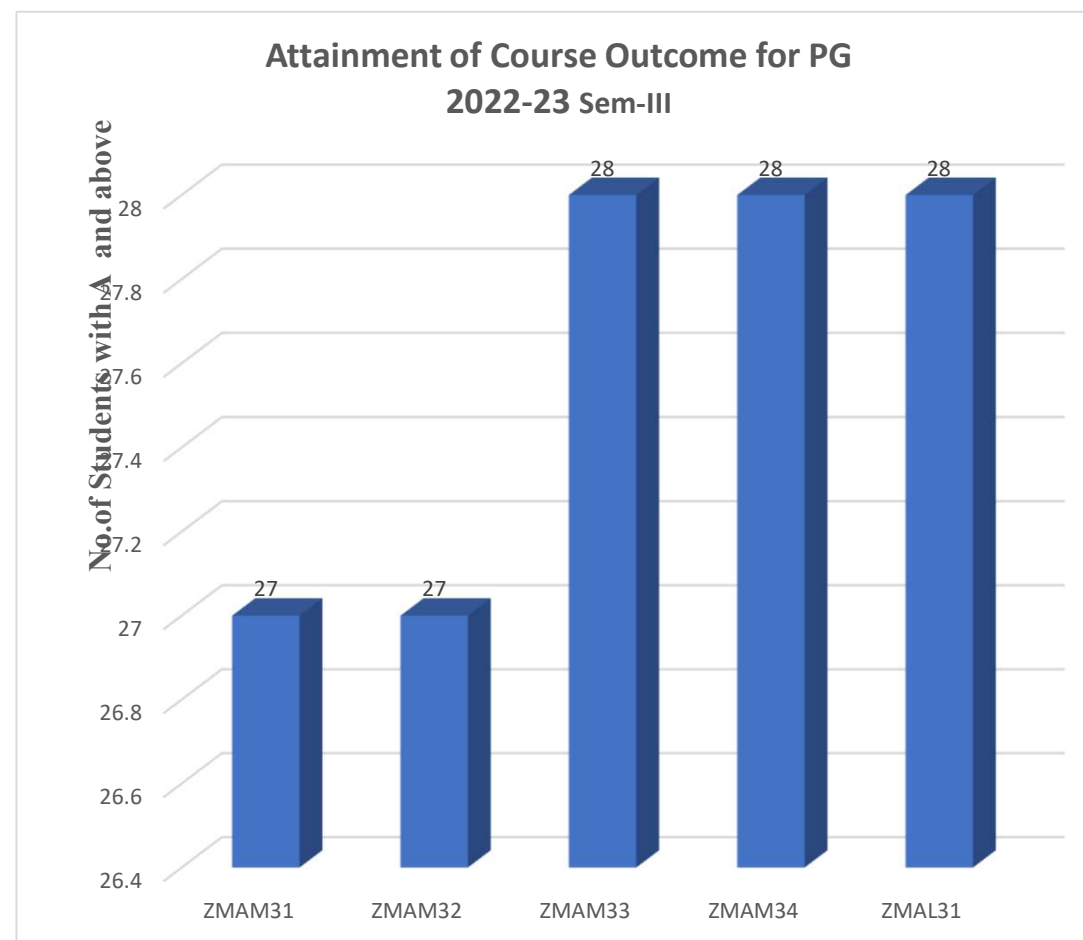
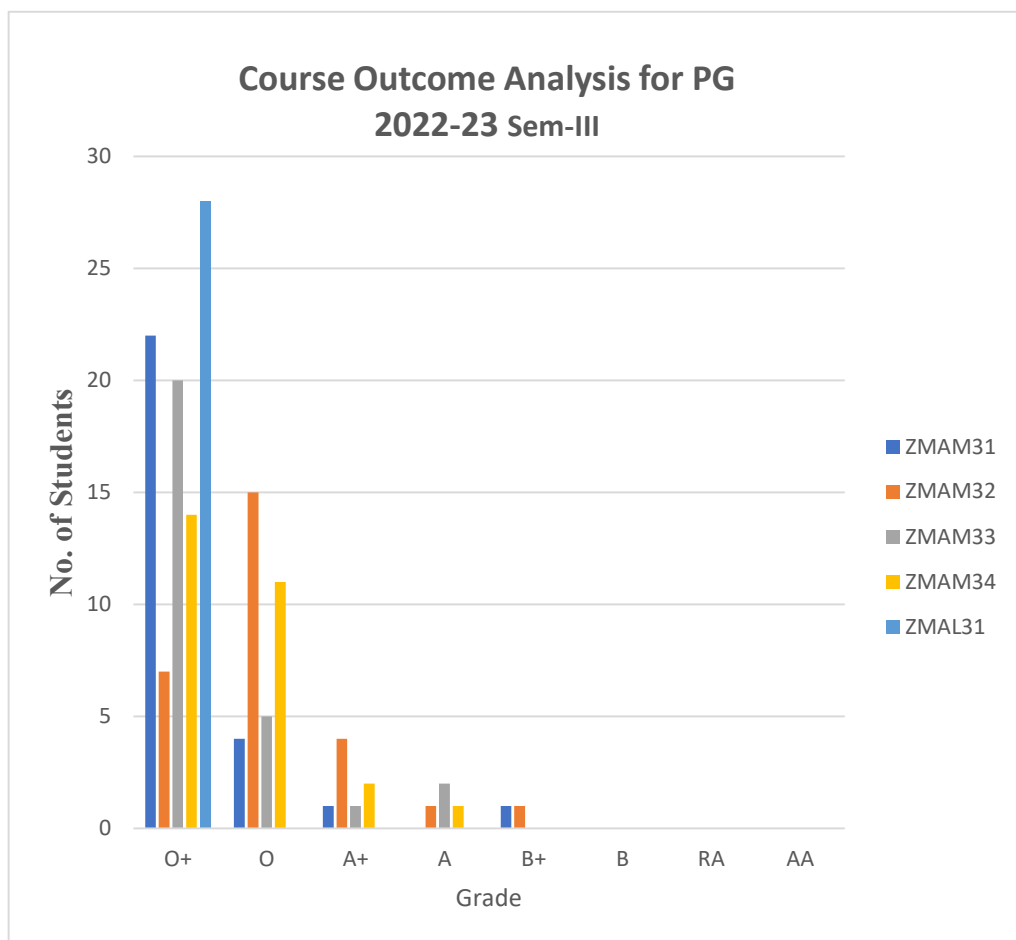
Sem	Major (P/T)/ Allied (P/T)/ NME/ SEC/Elective	Sub Code :	Name of Course	No.of Students								Total Students appeared	Total Students passed	No.of Students with A and above	Percentage of Students with A and above
				O+	O	A+	A	B+	B	RA	AA				
I	Major	ZMAM11	Algebra-I	14	8	6	1	0	0	0	0	29	29	29	100
	Major	ZMAM12	Analysis-I	20	7	1	1	0	0	0	0	29	29	29	100
	Major	ZMAM13	Analytic Number Theory	18	7	4	0	0	0	0	0	29	29	29	100
	Major	ZMAM14	Operations Research	13	10	6	0	0	0	0	0	29	29	29	100
	Major	ZMAM15	Ordinary Differential Equations	20	6	3	0	0	0	0	0	29	29	29	100



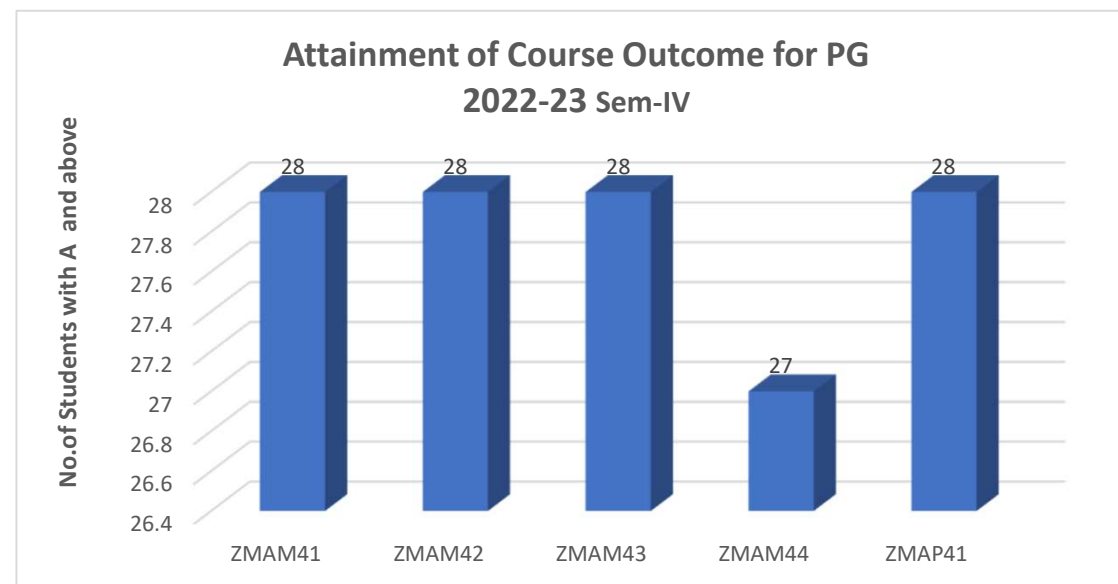
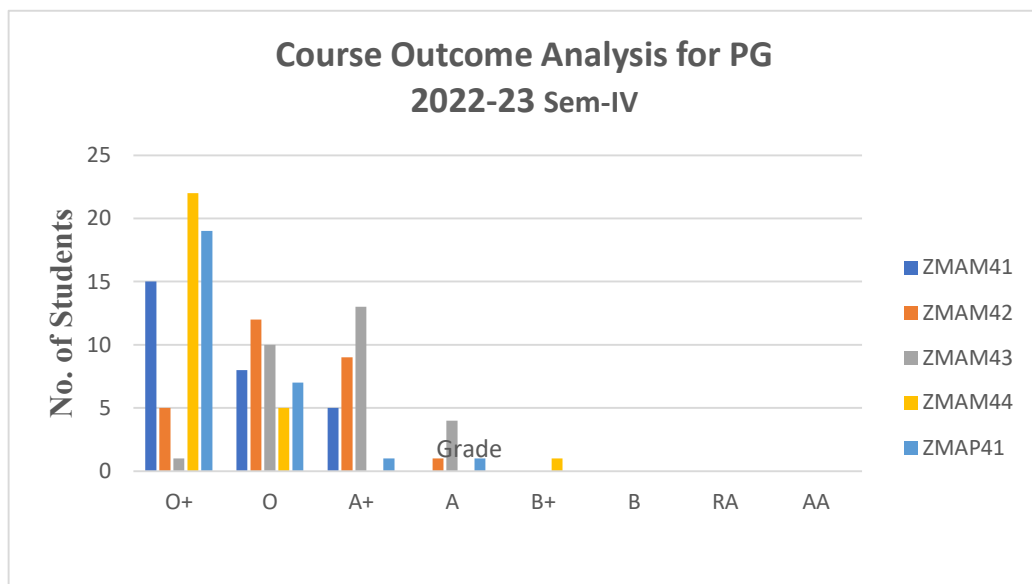
				O+	O	A+	A	B+	B	RA	AA				
II	Major	ZMAM21	Algebra-II	8	13	6	1	0	0	0	1	28	28	28	100
	Major	ZMAM22	Analysis-II	8	20	0	0	0	0	0	1	28	28	28	100
	Major	ZMAM23	Advanced Calculus	21	5	1	1	0	0	0	1	28	28	28	100
	Major	ZMAM24	Differential Geometry	1	20	6	1	0	0	0	1	28	28	28	100
	Major	ZMAM25	Research Methodology and Statistics	24	4	0	0	0	0	0	1	28	28	28	100
	Elective Theo	ZMAE23	Python	26	2	0	0	0	0	0	1	28	28	28	100



				O+	O	A+	A	B+	B	RA	AA				
III	Major	ZMAM31	Advanced Algebra - I	22	4	1	0	1	0	0	0	28	28	27	96.43
	Major	ZMAM32	Graph Theory	7	15	4	1	1	0	0	0	28	28	27	96.43
	Major	ZMAM33	Measure and Integration	20	5	1	2	0	0	0	0	28	28	28	100
	Major	ZMAM34	Topology - I	14	11	2	1	0	0	0	0	28	28	28	100
	Elective Pract	ZMAL31	Python Programming	28	0	0	0	0	0	0	0	28	28	28	100



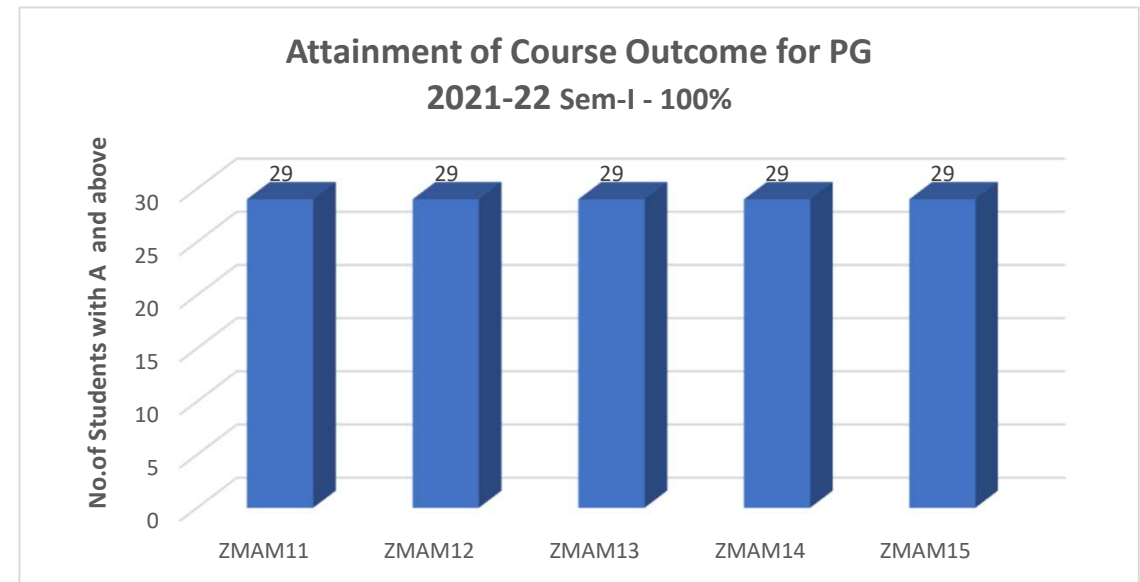
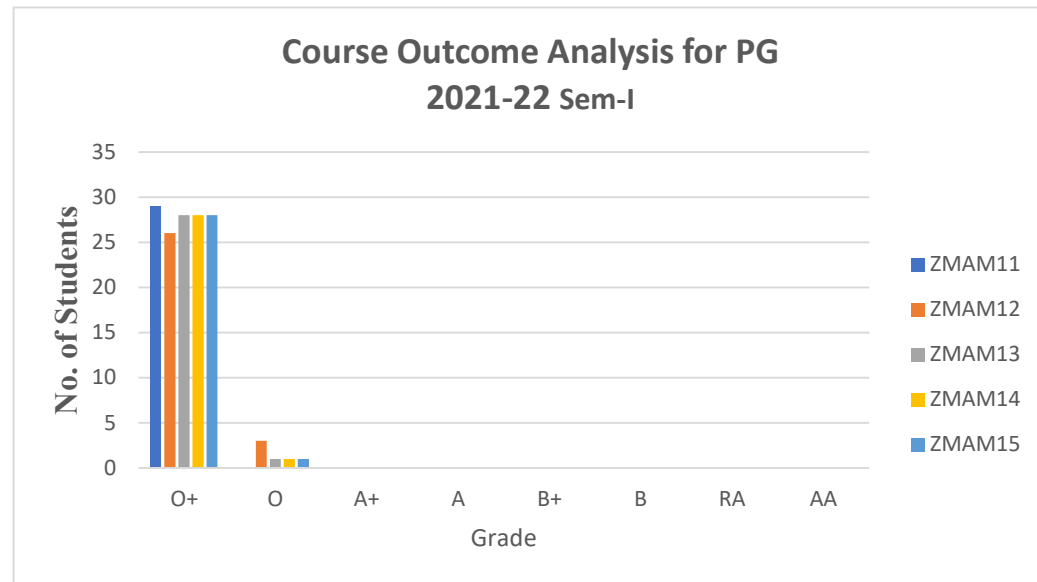
				O+	O	A+	A	B+	B	RA	AA				
IV	Major	ZMAM41	Advanced Algebra - II	15	8	5	0	0	0	0	0	28	28	28	100
	Major	ZMAM42	Complex Analysis	5	12	9	1	0	0	0	0	28	28	28	100
	Major	ZMAM43	Functional Analysis	1	10	13	4	0	0	0	0	28	28	28	100
	Major	ZMAM44	Topology- II	22	5	0	0	1	0	0	0	28	28	27	96.43
	Project	ZMAP41	Project	19	7	1	1	0	0	0	0	28	28	28	100



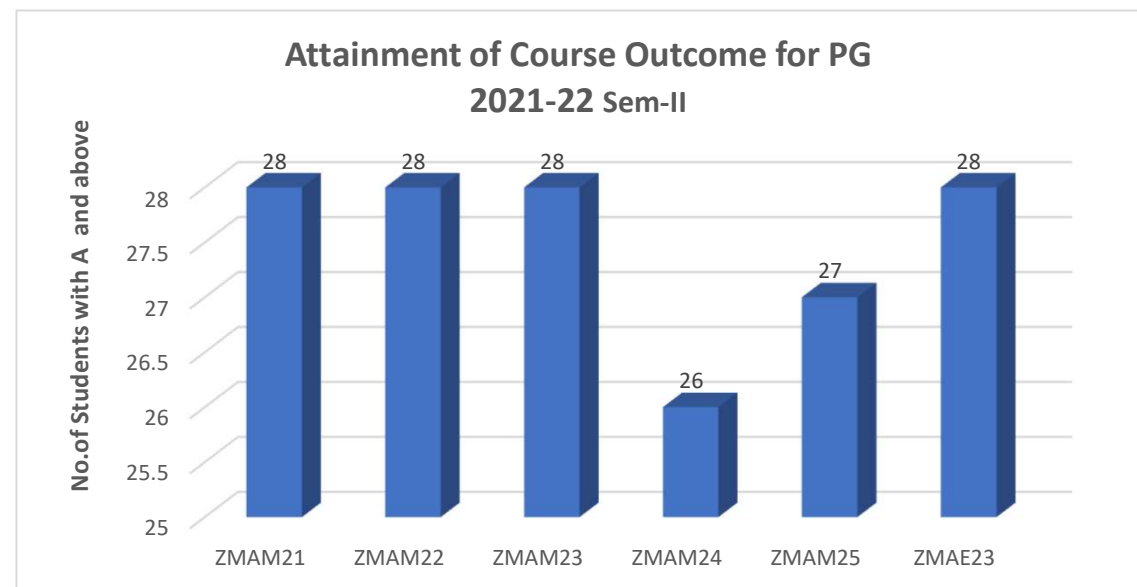
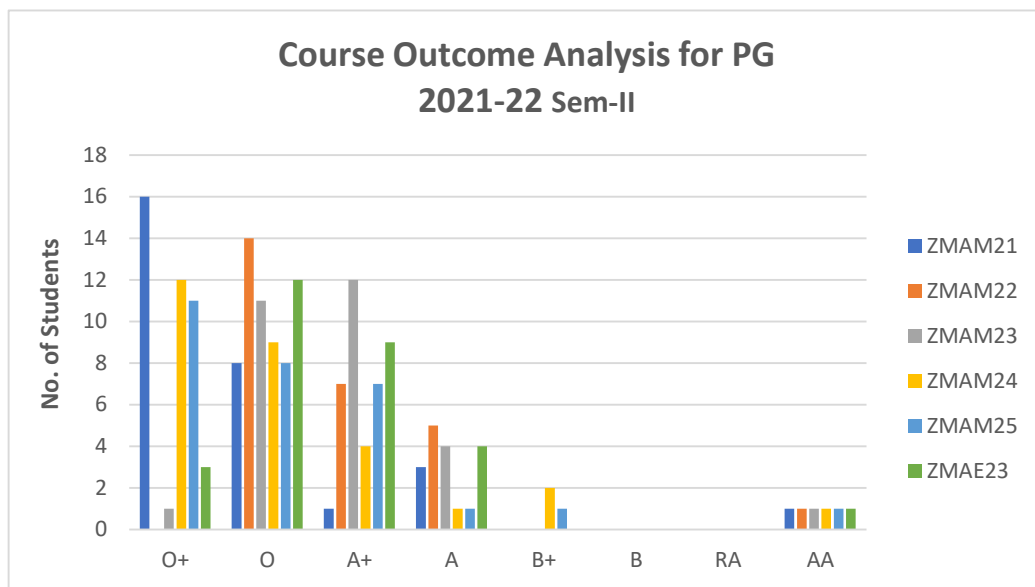
## Course Outcome Analysis for PG 2021-2022

### MATHEMATICS (A)

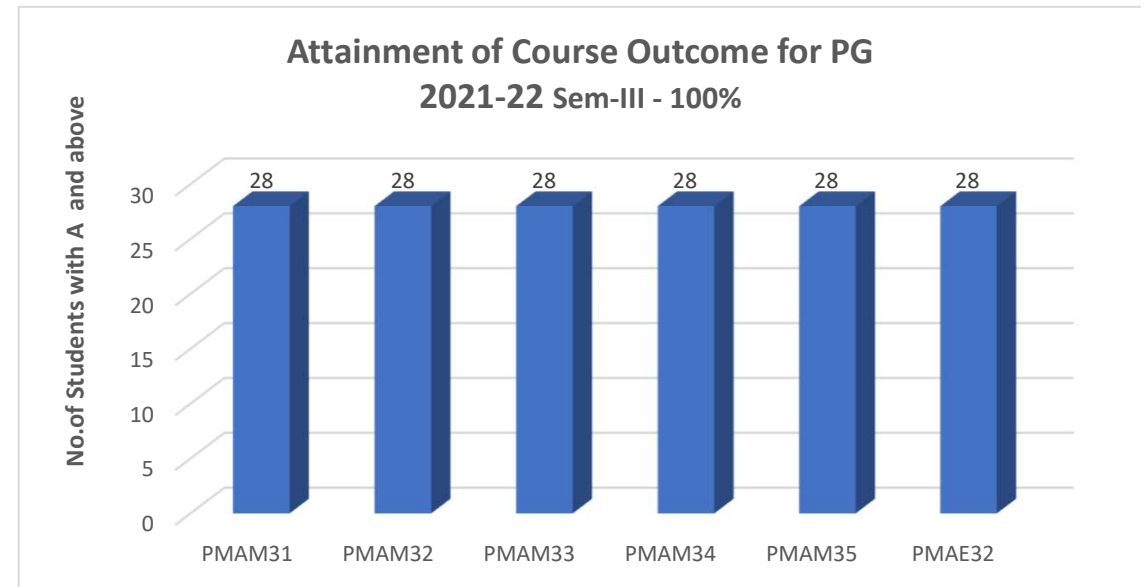
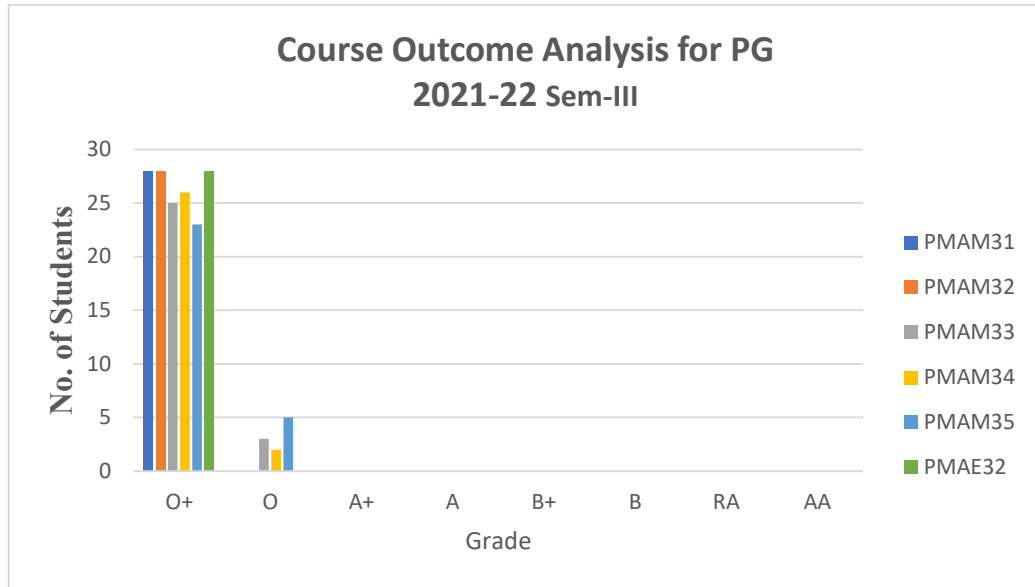
Sem	Major (P/T)/ Allied (P/T)/ NME/ SEC/Elective	Sub Code :	Name of Course	No. of Students								Total Students appeared	Total Students passed	No. of Students with A and above	Percentage of Students with A and above
				O+	O	A+	A	B+	B	RA	AA				
I				O+	O	A+	A	B+	B	RA	AA				
	Major	ZMAM11	Algebra-I	29	0	0	0	0	0	0	0	29	29	29	100
	Major	ZMAM12	Analysis-I	26	3	0	0	0	0	0	0	29	29	29	100
	Major	ZMAM13	Analytic Number Theory	28	1	0	0	0	0	0	0	29	29	29	100
	Major	ZMAM14	Operations Research	28	1	0	0	0	0	0	0	29	29	29	100
Major	ZMAM15	Numerical Ordinary Differential Equations	28	1	0	0	0	0	0	0	29	29	29	100	



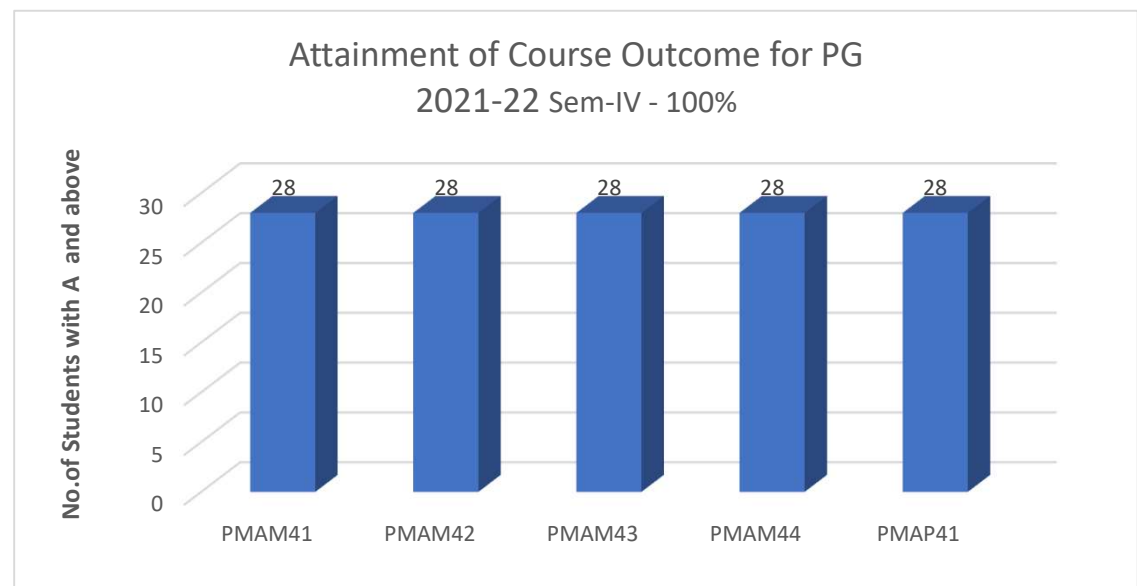
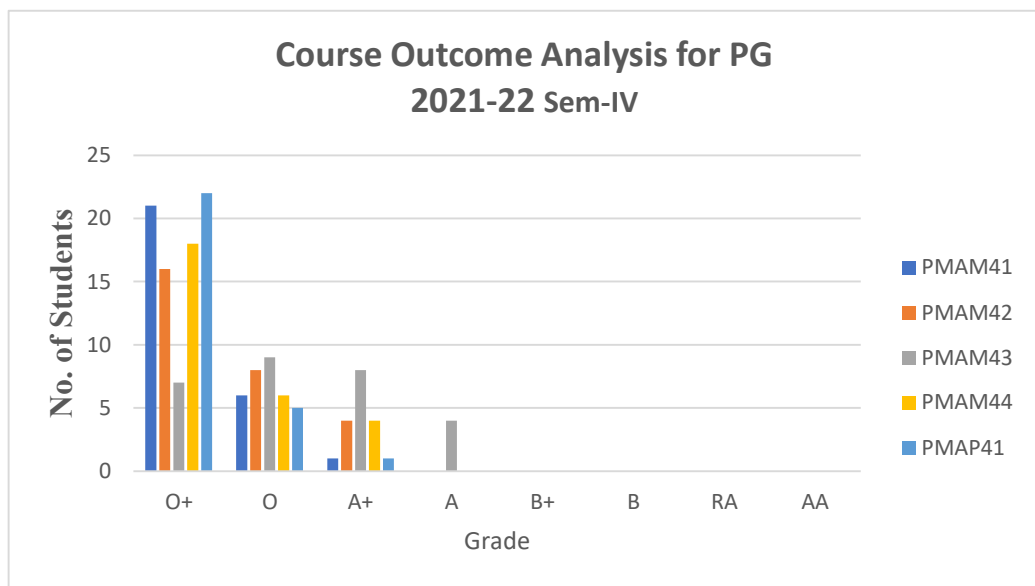
				O+	O	A+	A	B+	B	RA	AA				
II	Major	ZMAM21	Algebra-II	16	8	1	3	0	0	0	1	28	28	28	100
	Major	ZMAM22	Analysis-II	0	14	7	5	0	0	0	1	28	28	28	100
	Major	ZMAM23	Advanced Calculus	1	11	12	4	0	0	0	1	28	28	28	100
	Major	ZMAM24	Differential Geometry	12	9	4	1	2	0	0	1	28	28	26	92.86
	Major	ZMAM25	Research Methodology and Statistics	11	8	7	1	1	0	0	1	28	28	27	96.43
	Elective	ZMAE23	Python Programming	3	12	9	4	0	0	0	1	28	28	28	100



				O+	O	A+	A	B+	B	RA	AA				
III	Major	PMAM31	Measure and Integration	28	0	0	0	0	0	0	0	28	28	28	100
	Major	PMAM32	Topology-I	28	0	0	0	0	0	0	0	28	28	28	100
	Major	PMAM33	Advanced Algebra- I	25	3	0	0	0	0	0	0	28	28	28	100
	Major	PMAM34	Operations Research	26	2	0	0	0	0	0	0	28	28	28	100
	Major	PMAM35	Research Methodology	23	5	0	0	0	0	0	0	28	28	28	100
	Elective	PMAE32	Calculus of Variation and Integral Equations	28	0	0	0	0	0	0	0	28	28	28	100



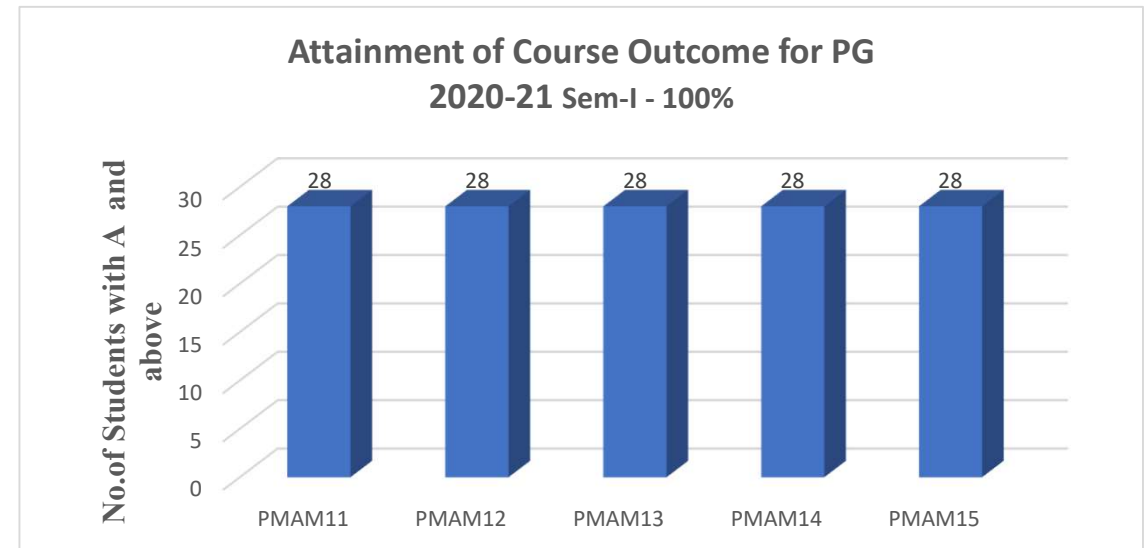
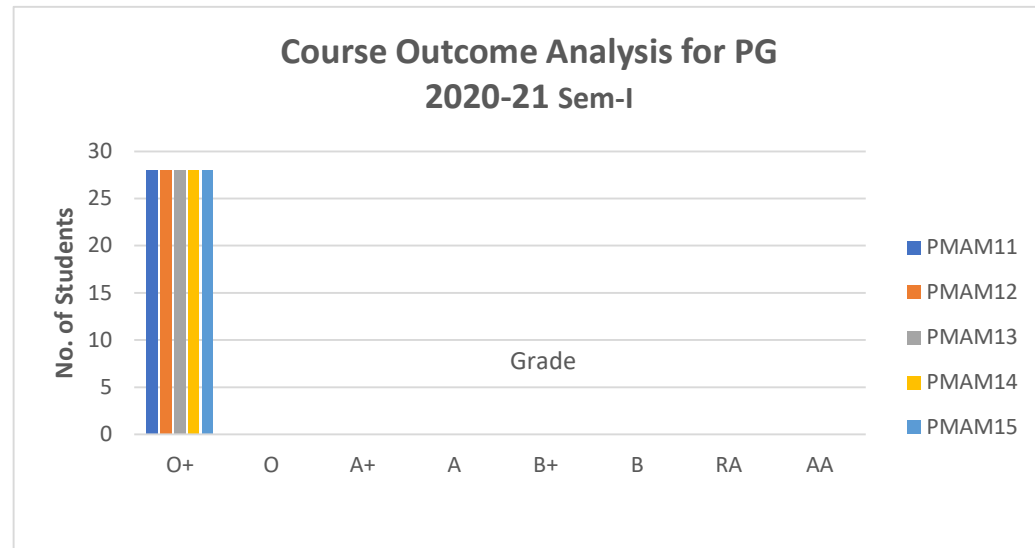
				O+	O	A+	A	B+	B	RA	AA				
IV	Major	PMAM41	Functional Analysis	21	6	1	0	0	0	0	0	28	28	28	100
	Major	PMAM42	Complex Analysis	16	8	4	0	0	0	0	0	28	28	28	100
	Major	PMAM43	Advanced Algebra- II	7	9	8	4	0	0	0	0	28	28	28	100
	Major	PMAM44	Topology- II	18	6	4	0	0	0	0	0	28	28	28	100
	Project	PMAP41	Project	22	5	1	0	0	0	0	0	28	28	28	100



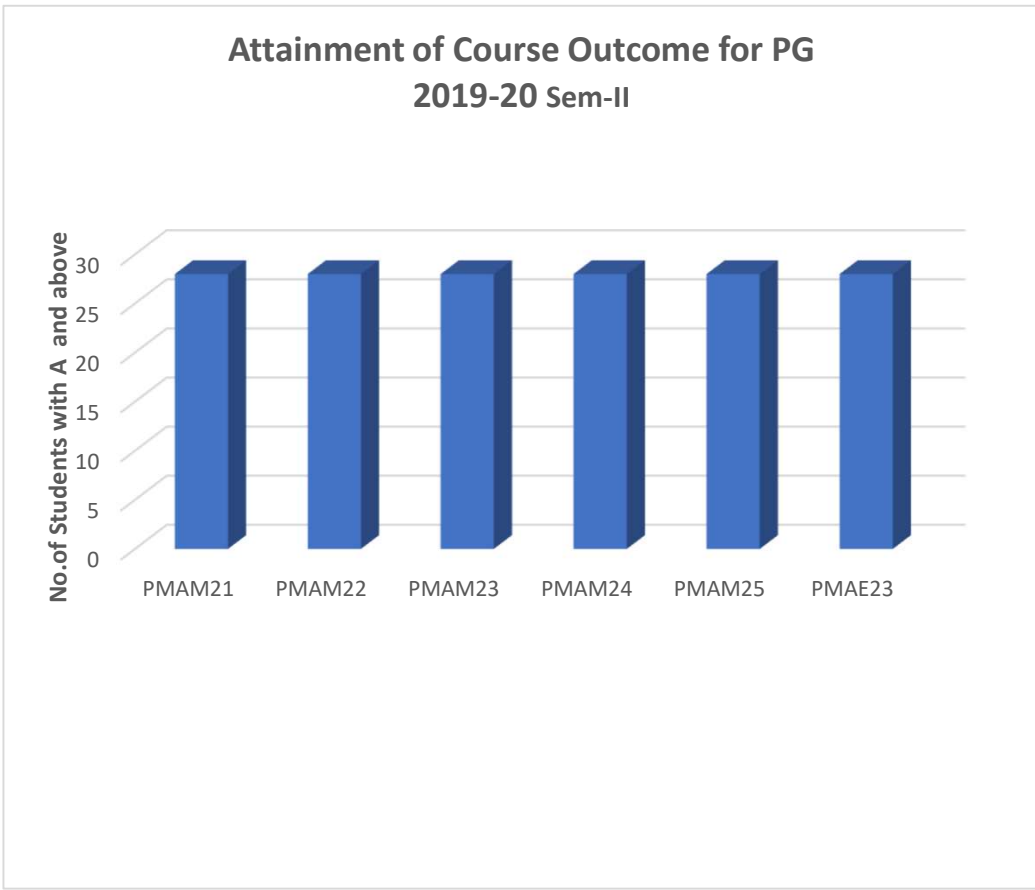
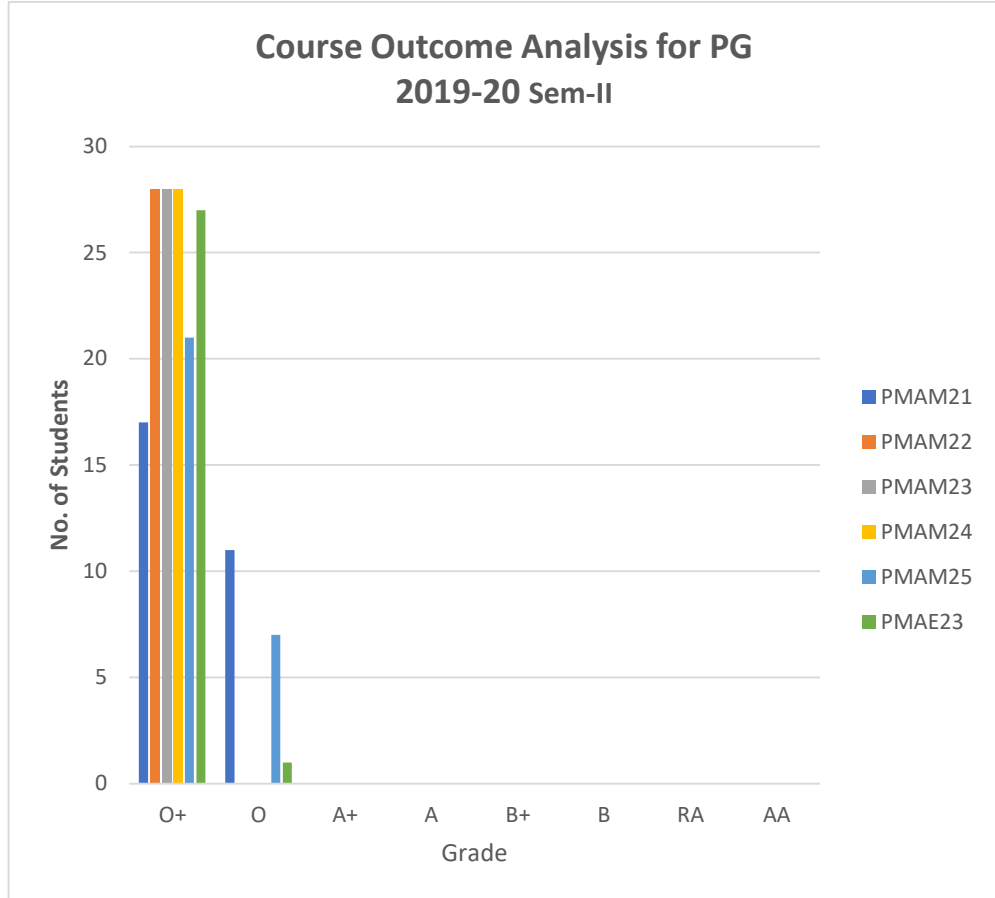
## Course Outcome Analysis for PG 2020-2021

### MATHEMATICS (A)

Sem	Major (P/T)/ Allied (P/T)/ NME/ SEC/Elective	Sub Code :	Name of Course	No. of Students								Total Students appeared	Total Students passed	No. of Students with A and above	Percentage of Students with A and above
				O+	O	A+	A	B+	B	RA	AA				
I	Major	PMAM11	Algebra-I	28	0	0	0	0	0	0	0	28	28	28	100
	Major	PMAM12	Analysis-I	28	0	0	0	0	0	0	0	28	28	28	100
	Major	PMAM13	Analytic Number Theory	28	0	0	0	0	0	0	0	28	28	28	100
	Major	PMAM14	Ordinary Differential Equations	28	0	0	0	0	0	0	0	28	28	28	100
	Major	PMAM15	Numerical Analysis	28	0	0	0	0	0	0	0	28	28	28	100

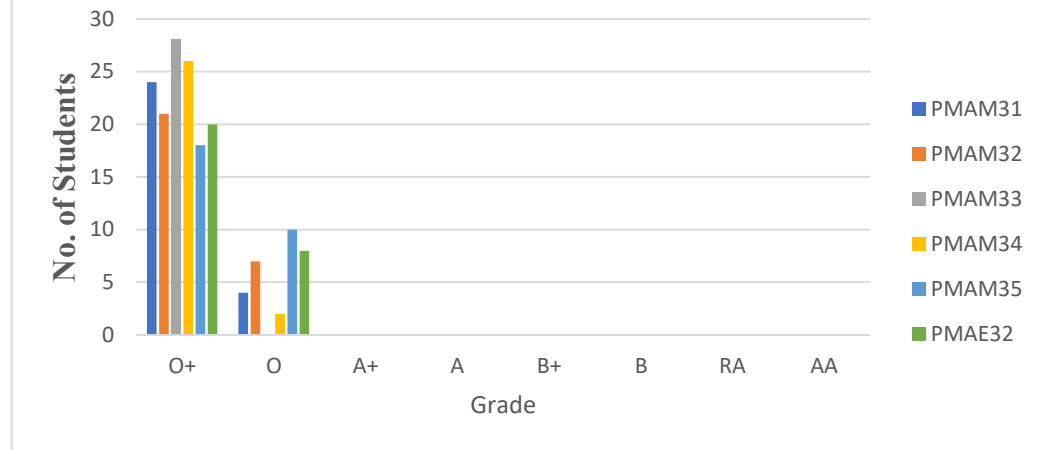


			O+	O	A+	A	B+	B	RA	AA					
II	Major	PMAM21	Algebra-II	17	11	0	0	0	0	0	0	28	28	28	100
	Major	PMAM22	Analysis-II	28	0	0	0	0	0	0	0	28	28	28	100
	Major	PMAM23	Classical Mechanics	28	0	0	0	0	0	0	0	28	28	28	100
	Major	PMAM24	Differential Geometry	28	0	0	0	0	0	0	0	28	28	28	100
	Major	PMAM25	Graph Theory	21	7	0	0	0	0	0	0	28	28	28	100
	Elective	PMAE23	Partial Differential Equations	27	1	0	0	0	0	0	0	28	28	28	100

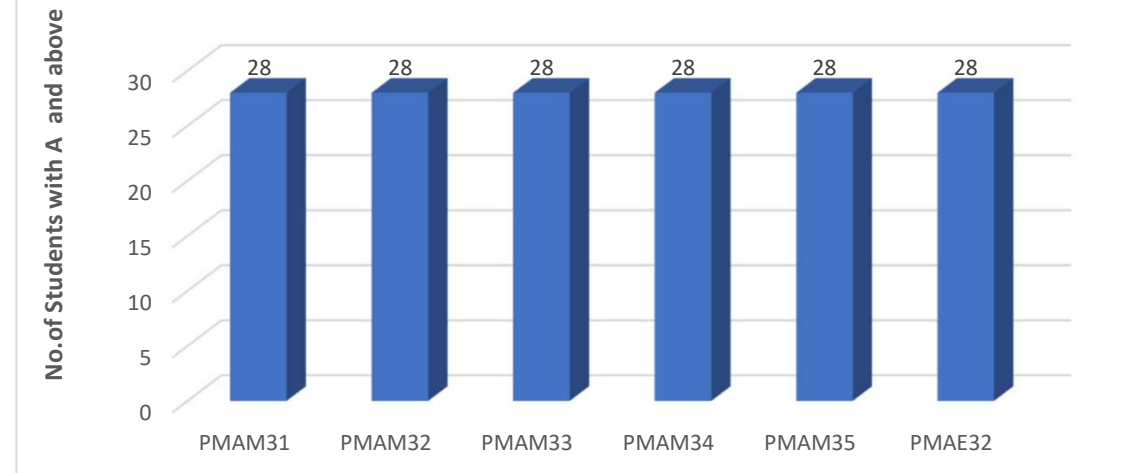


				O+	O	A+	A	B+	B	RA	AA				
III	Major	PMAM31	Measure and Integration	24	4	0	0	0	0	0	0	28	28	28	100
	Major	PMAM32	Topology-I	21	7	0	0	0	0	0	0	28	28	28	100
	Major	PMAM33	Advanced Algebra- I	28	0	0	0	0	0	0	0	28	28	28	100
	Major	PMAM34	Operations Research	26	2	0	0	0	0	0	0	28	28	28	100
	Major	PMAM35	Research Methodology	18	10	0	0	0	0	0	0	28	28	28	100
	Elective	PMAE32	Calculus of Variation and Integral Equations	20	8	0	0	0	0	0	0	28	28	28	100

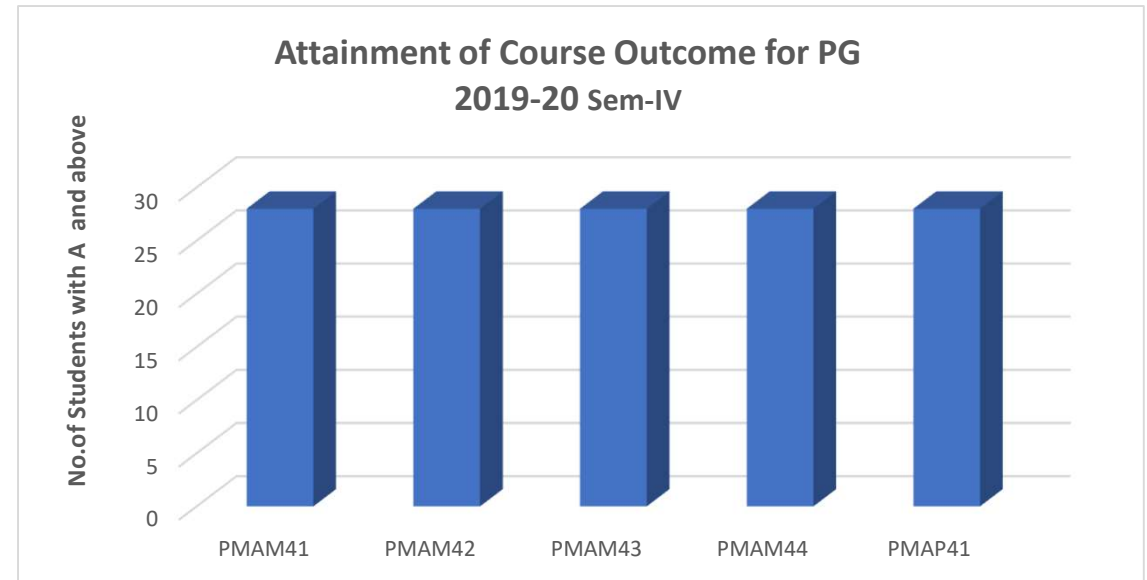
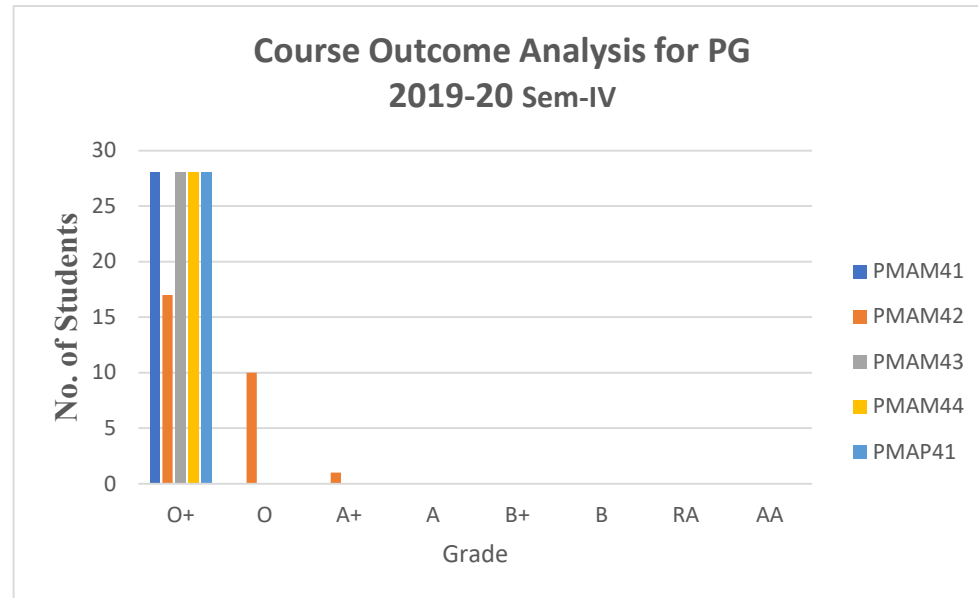
**Course Outcome Analysis for PG  
2019-20 Sem-III**



**Attainment of Course Outcome for PG  
2019-20 Sem-III**



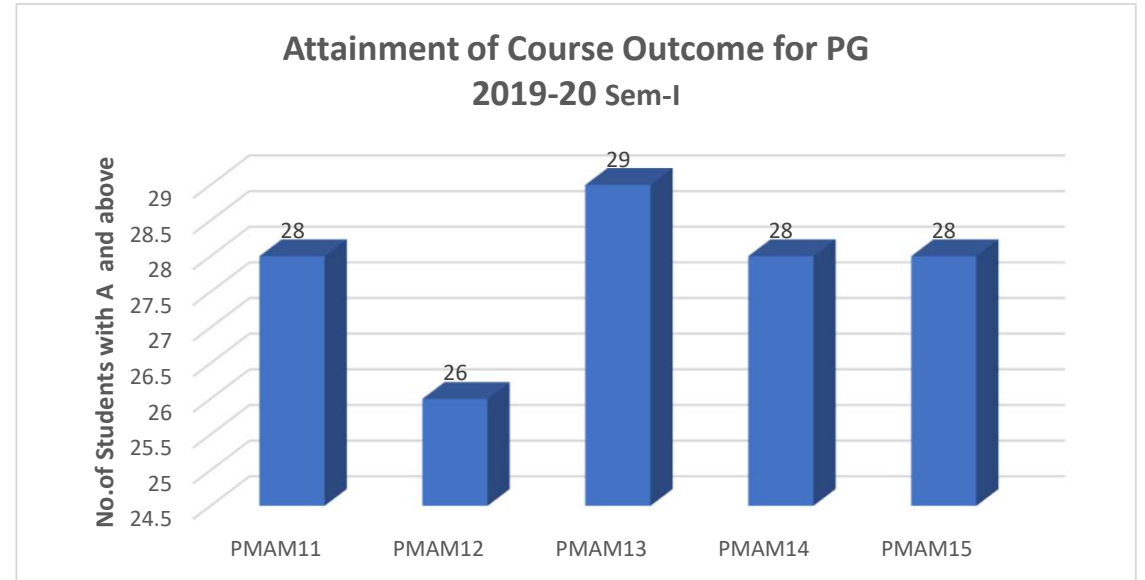
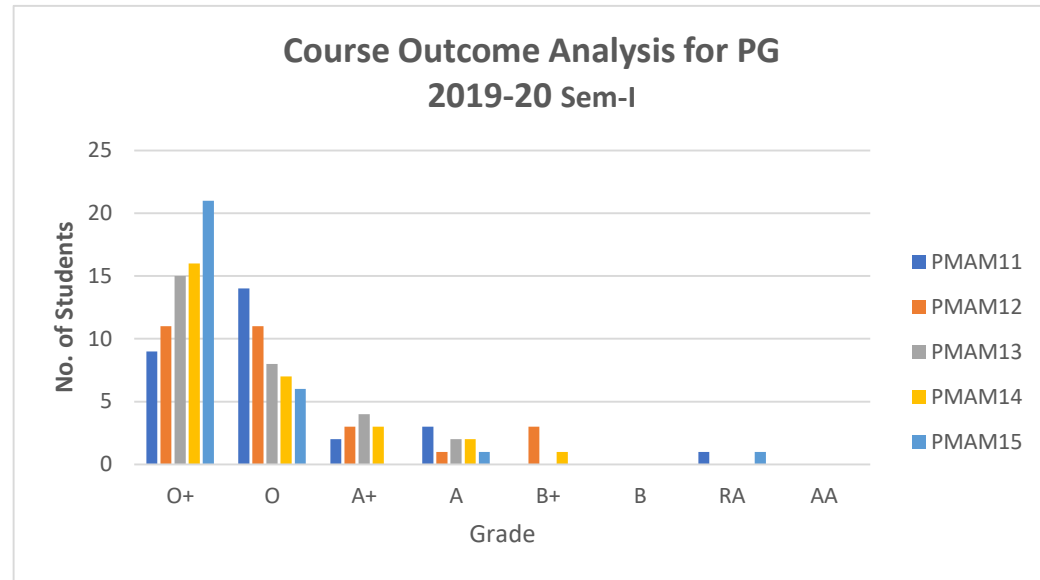
				O+	O	A+	A	B+	B	RA	AA					
IV	Major	PMAM41	Functional Analysis	28	0	0	0	0	0	0	0	0	28	28	28	100
	Major	PMAM42	Complex Analysis	17	10	1	0	0	0	0	0	0	28	28	28	100
	Major	PMAM43	Advanced Algebra- II	28	0	0	0	0	0	0	0	0	28	28	28	100
	Major	PMAM44	Topology- II	28	0	0	0	0	0	0	0	0	28	28	28	100
	Project	PMAP41	Project	28	0	0	0	0	0	0	0	0	28	28	28	100



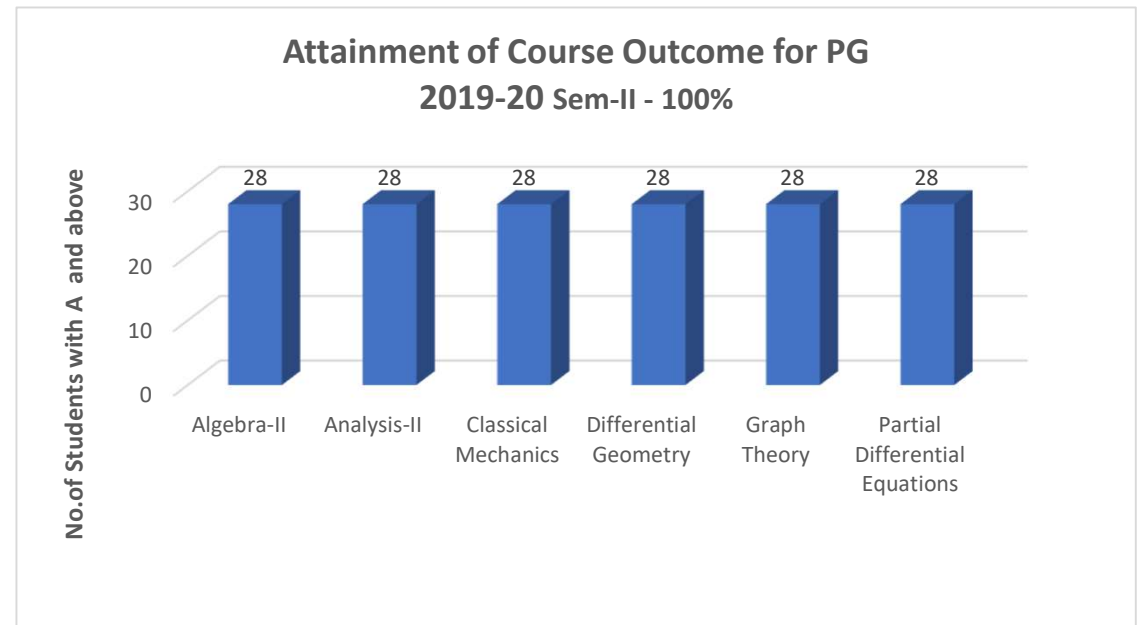
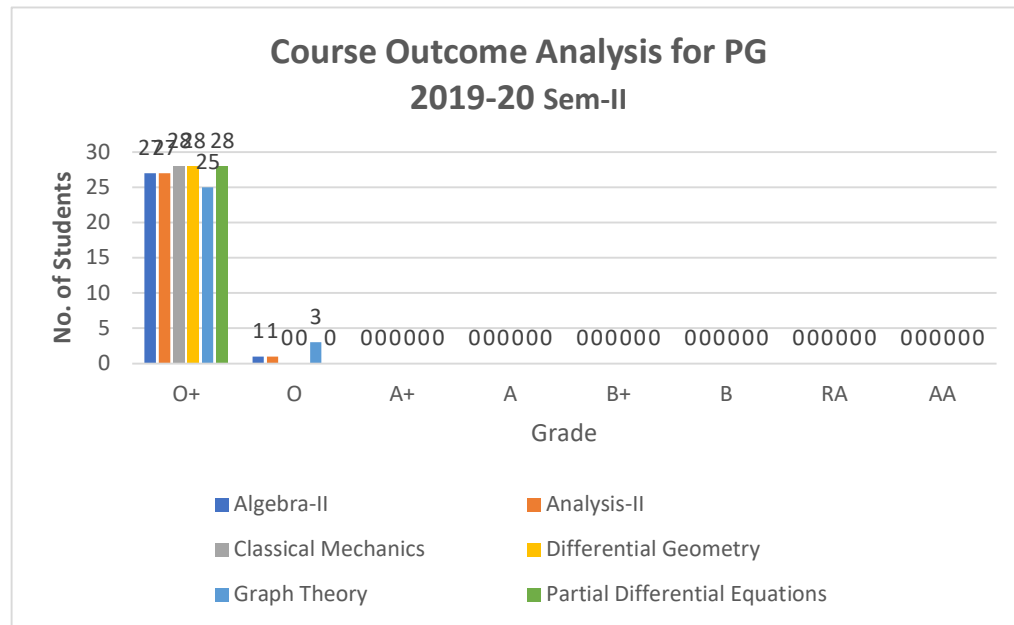
# Course Outcome Analysis for PG 2019-2020

## MATHEMATICS (A)

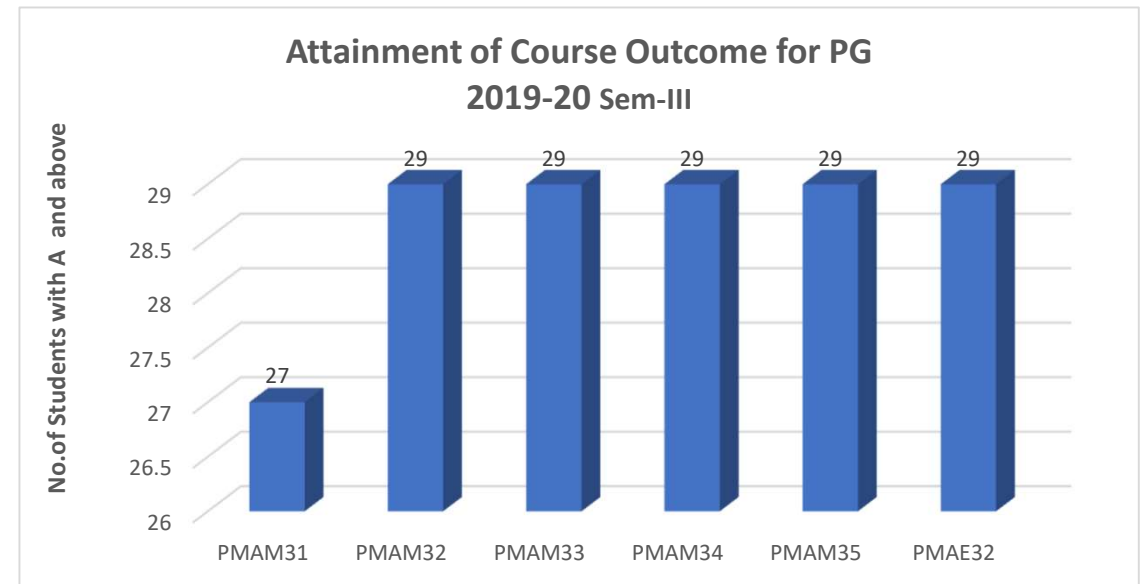
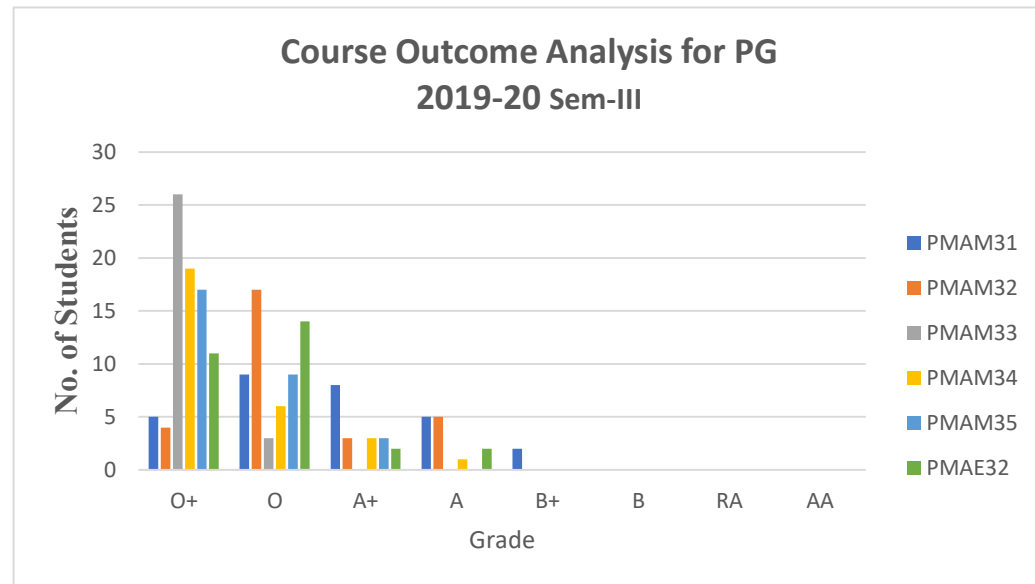
Sem	Major (P/T)/ Allied (P/T)/ NME/ SEC/Elective	Sub Code :	Name of Course	No.of Students								Total Students appeared	Total Students passed	No.of Students with A and above	Percentage of Students with A and above
				O+	O	A+	A	B+	B	RA	AA				
I	Major	PMAM11	Algebra-I	9	14	2	3	0	0	1	0	29	28	28	96.6
	Major	PMAM12	Analysis-I	11	11	3	1	3	0	0	0	29	29	26	89.66
	Major	PMAM13	Analytic Number Theory	15	8	4	2	0	0	0	0	29	29	29	100
	Major	PMAM14	Ordinary Differential Equations	16	7	3	2	1	0	0	0	29	29	28	96.6
	Major	PMAM15	Numerical Analysis	21	6	0	1	0	0	1	0	29	28	28	96.6



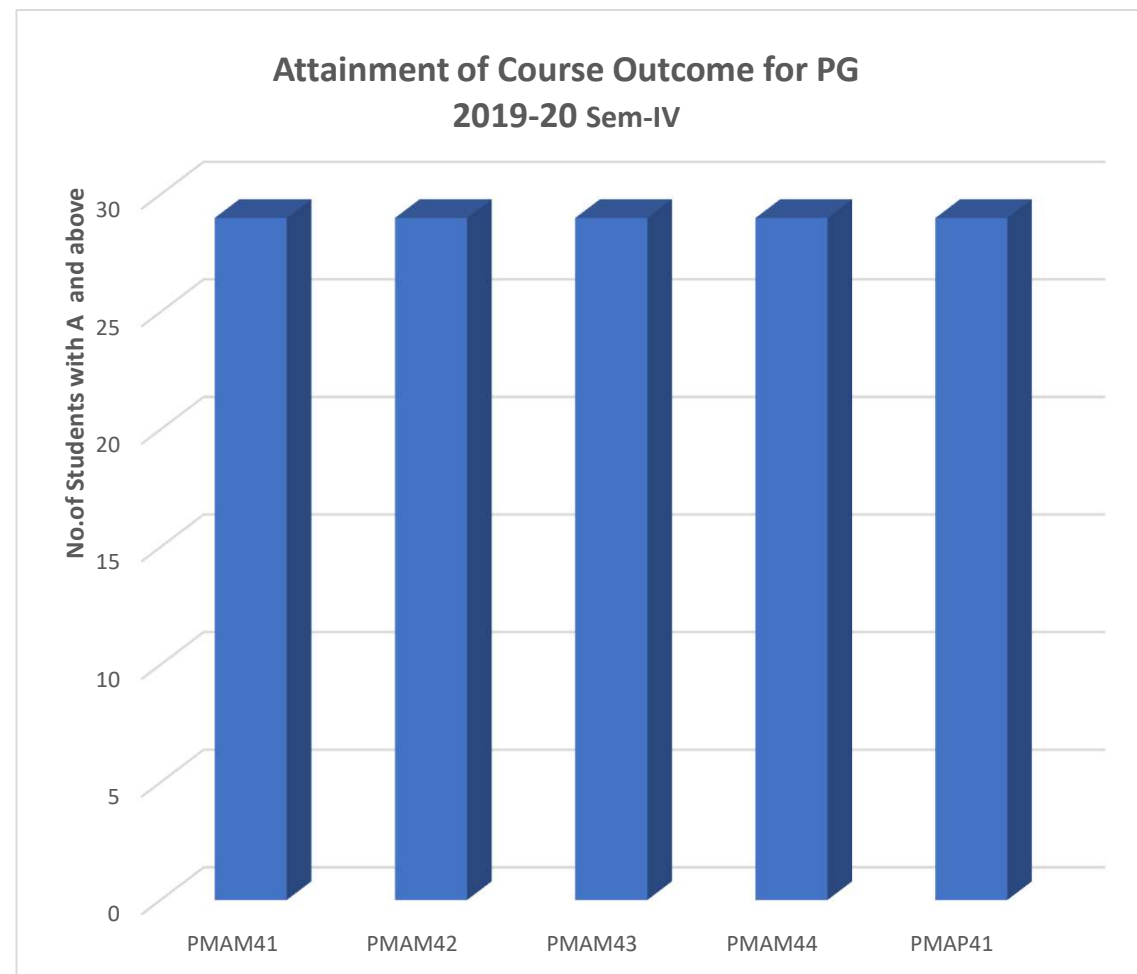
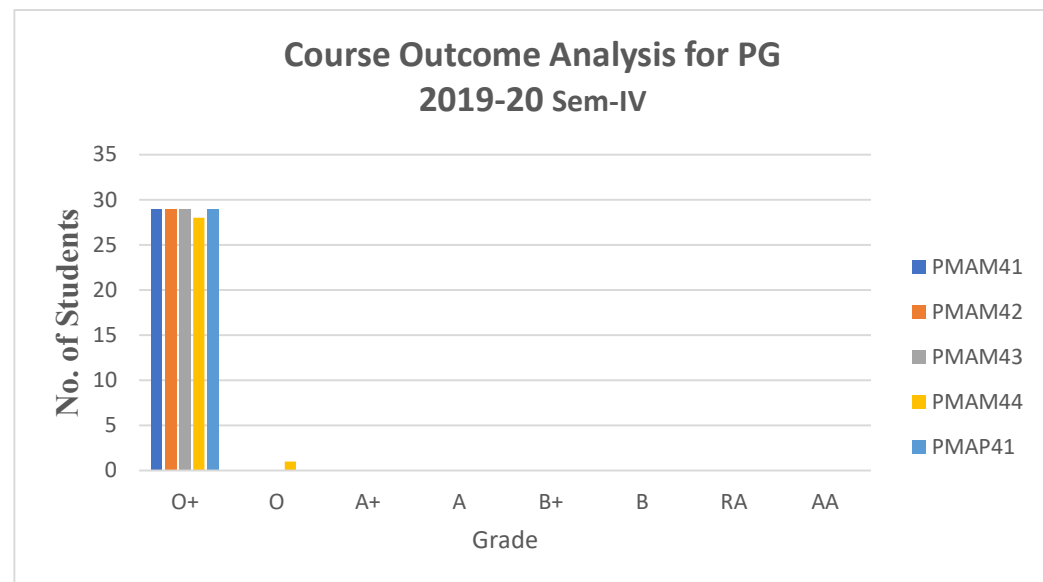
				O+	O	A+	A	B+	B	RA	AA				
II	Major	PMAM21	Algebra-II	27	1	0	0	0	0	0	0	28	28	28	100
	Major	PMAM22	Analysis-II	27	1	0	0	0	0	0	0	28	28	28	100
	Major	PMAM23	Classical Mechanics	28	0	0	0	0	0	0	0	28	28	28	100
	Major	PMAM24	Differential Geometry	28	0	0	0	0	0	0	0	28	28	28	100
	Major	PMAM25	Graph Theory	25	3	0	0	0	0	0	0	28	28	28	100
	Elective	PMAE23	Partial Differential Equations	28	0	0	0	0	0	0	0	28	28	28	100



				O+	O	A+	A	B+	B	RA	AA				
III	Major	PMAM31	Measure and Integration	5	9	8	5	2	0	0	0	29	29	27	93.1
	Major	PMAM32	Topology-I	4	17	3	5	0	0	0	0	29	29	29	100
	Major	PMAM33	Advanced Algebra- I	26	3	0	0	0	0	0	0	29	29	29	100
	Major	PMAM34	Operations Research	19	6	3	1	0	0	0	0	29	29	29	100
	Major	PMAM35	Research Methodology	17	9	3	0	0	0	0	0	29	29	29	100
	Elective	PMAE32	Calculus of Variation and Integral Equations	11	14	2	2	0	0	0	0	29	29	29	100



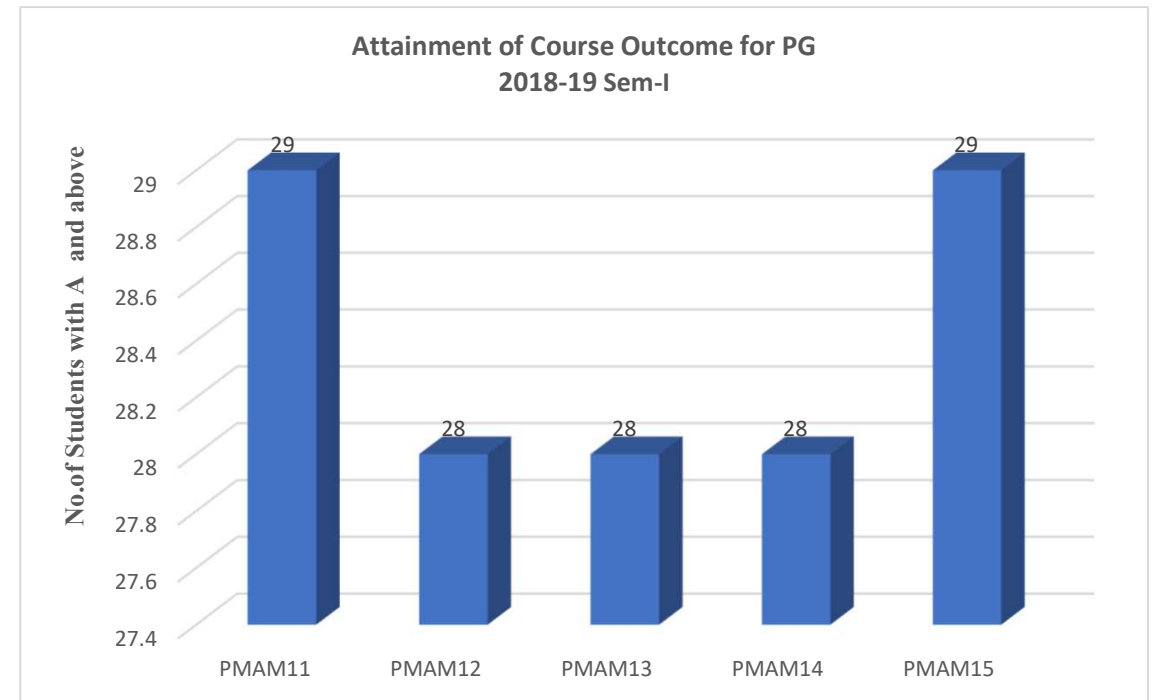
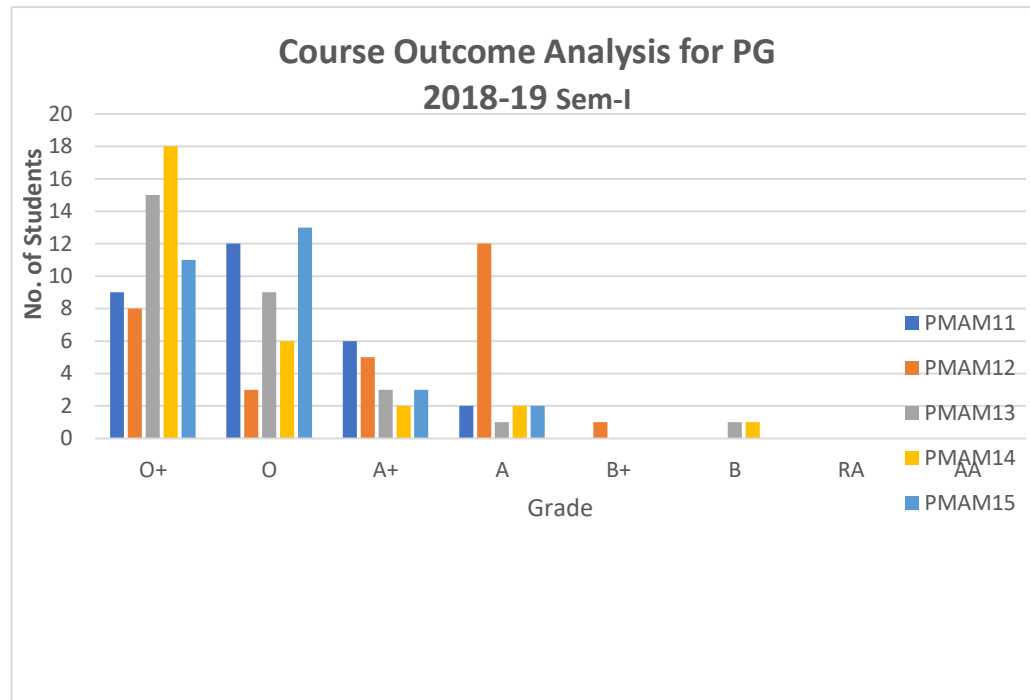
				O+	O	A+	A	B+	B	RA	AA				
IV	Major	PMAM41	Functional Analysis	29	0	0	0	0	0	0	0	29	29	29	100
	Major	PMAM42	Complex Analysis	29	0	0	0	0	0	0	0	29	29	29	100
	Major	PMAM43	Advanced Algebra- II	29	0	0	0	0	0	0	0	29	29	29	100
	Major	PMAM44	Topology- II	28	1	0	0	0	0	0	0	29	29	29	100
	Project	PMAP41	Project	29	0	0	0	0	0	0	0	29	29	29	100



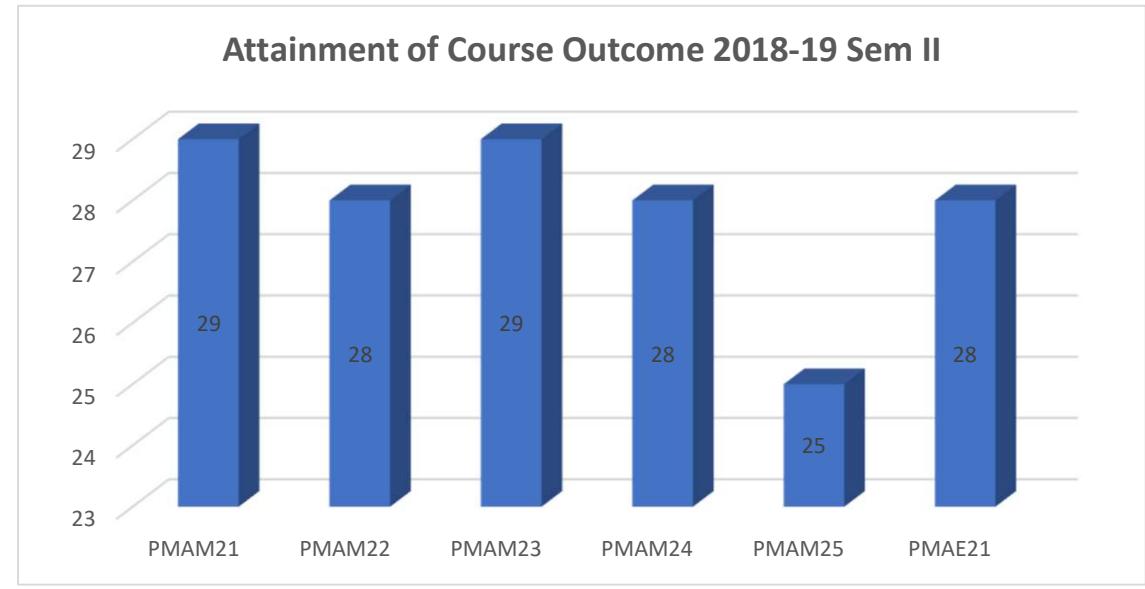
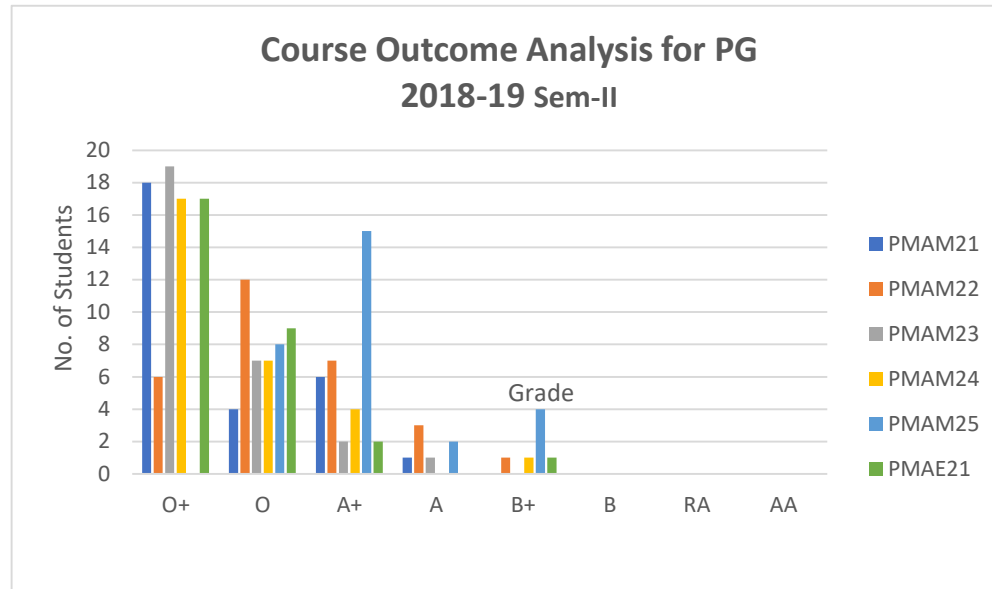
# Course Outcome Analysis for PG 2018-2019

## MATHEMATICS (A)

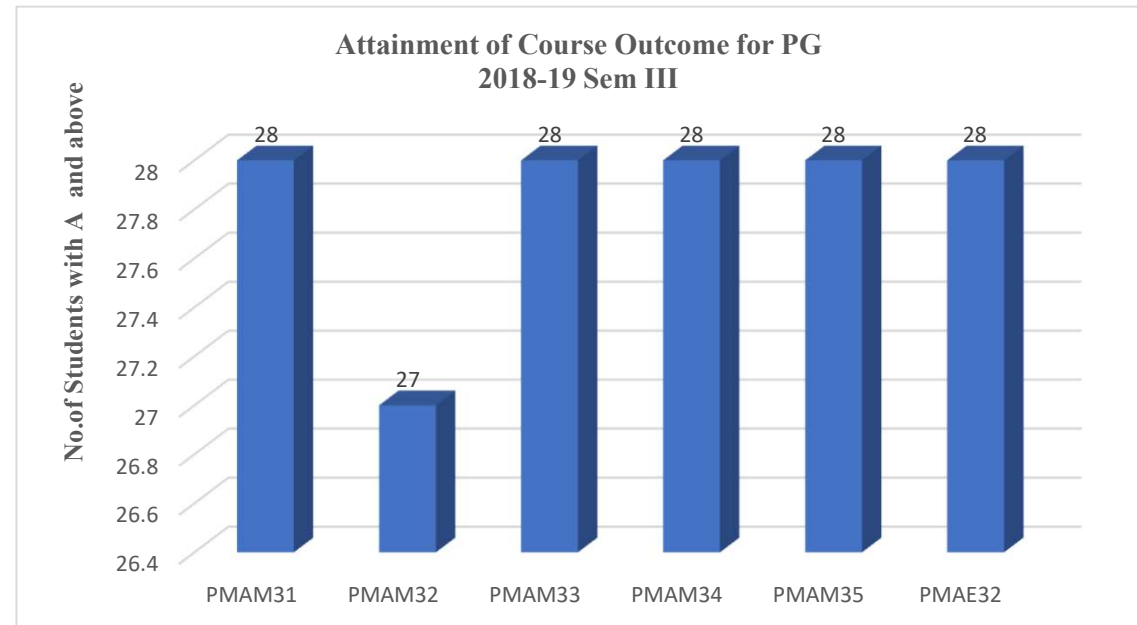
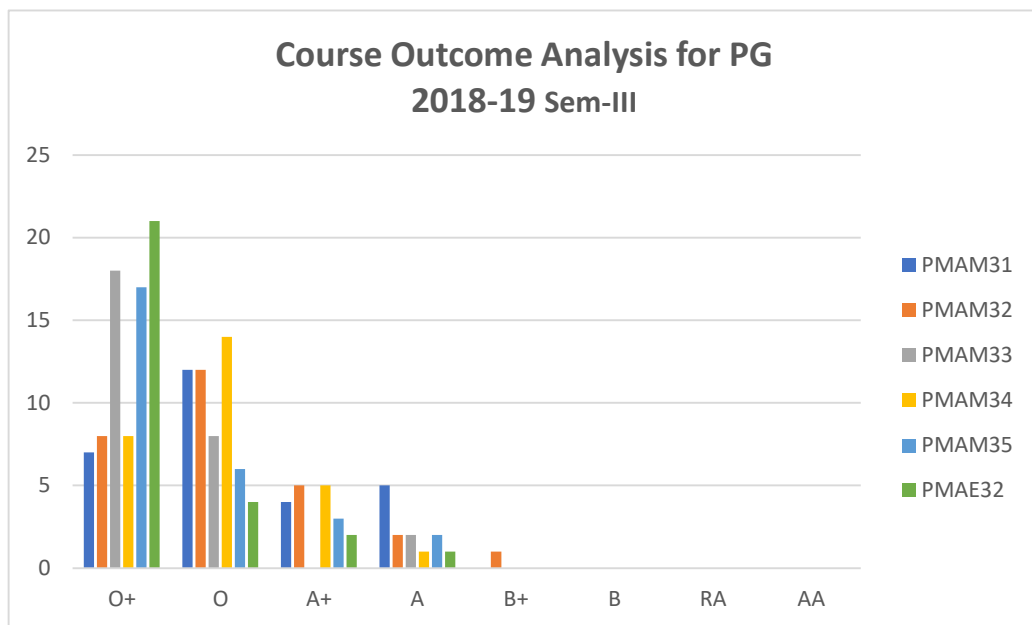
Sem	Major (P/T)/ Allied (P/T)/ NME/ SEC/Elective	Sub Code :	Name of Course	No.of Students								Total Students appeared	Total Students passed	No.of Students with A and above	Percentage of Students with A and above
				O+	O	A+	A	B+	B	RA	AA				
I	Major	PMAM11	Algebra-I	9	12	6	2	0	0	0	0	29	29	29	100
	Major	PMAM12	Analysis-I	8	3	5	12	1	0	0	0	29	29	28	96.55
	Major	PMAM13	Analytic Number Theory	15	9	3	1	0	1	0	0	29	29	28	96.6
	Major	PMAM14	Ordinary Differential Equations	18	6	2	2	0	1	0	0	29	29	28	96.6
	Major	PMAM15	Numerical Analysis	11	13	3	2	0	0	0	0	29	29	29	100



				O+	O	A+	A	B+	B	RA	AA				
II	Major	PMAM21	Algebra-II	18	4	6	1	0	0	0	0	29	29	29	100
	Major	PMAM22	Analysis-II	6	12	7	3	1	0	0	0	29	29	28	96.6
	Major	PMAM23	Classical Mechanics	19	7	2	1	0	0	0	0	29	29	29	100
	Major	PMAM24	Differential Geometry	17	7	4	0	1	0	0	0	29	29	28	96.6
	Major	PMAM25	Graph Theory	0	8	15	2	4	0	0	0	29	29	25	86.2
	Elective	PMAE21	Partial Differential Equations	17	9	2	0	1	0	0	0	29	29	28	96.6



				O+	O	A+	A	B+	B	RA	AA				
III	Major	PMAM31	Measure and Integration	7	12	4	5	0	0	0	0	28	28	28	100
	Major	PMAM32	Topology-I	8	12	5	2	1	0	0	0	28	28	27	96.6
	Major	PMAM33	Advanced Algebra- I	18	8	0	2	0	0	0	0	28	28	28	100
	Major	PMAM34	Operations Research	8	14	5	1	0	0	0	0	28	28	28	100
	Major	PMAM35	Research Methodology	17	6	3	2	0	0	0	0	28	28	28	100
	Elective	PMAE32	Calculus of Variation and Integral Equations	21	4	2	1	0	0	0	0	28	28	28	100



				O+	O	A+	A	B+	B	RA	AA				
IV	Major	PMAM41	Functional Analysis	23	4	0	1	0	0	0	0	28	28	28	100
	Major	PMAM42	Complex Analysis	19	7	1	1	0	0	0	0	28	28	28	100
	Major	PMAM43	Advanced Algebra- II	12	11	2	3	0	0	0	0	28	28	28	100
	Major	PMAM44	Topology- II	2	13	8	5	0	0	0	0	28	28	28	100
	Project	PMAP41	Project	19	6	1	2	0	0	0	0	28	28	28	100

